



**HANGCHA**  
FORKLIFT TRUCK

# H Series

1.0/1.2/1.4/1.6 T  
Electric Stacker

Good stability is possibly the most important single safety factor in truck operation a five-support concept with an integral low centre of gravity has resulted in an inherently safe truck.

The simple-to-use multi-function handle lets the operator concentrate on load handling in comfort, without worrying about truck control.

The non-linear function of forward and reverse speeds allows progressive acceleration, useful in confined spaces or narrow aisles, or with part-time operators.

Electronic braking ensures good stopping ability and safe, smooth operation, with less chance of damage to the truck or to the load.

Regenerative braking is also provided as standard for greater efficiency and safety.

An optional driver platform is available to help reduce fatigue on long shifts.



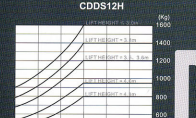
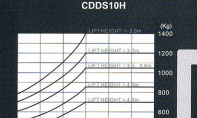
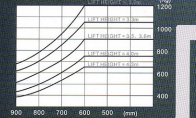
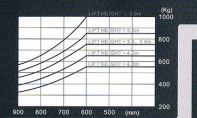
## 1.0 / 1.2t H series mast

Model	Max. lift height	Lift capacity	Extended lift height	Vertical clearance	Max. lift capacity		Lift capacity		
					1.0t	1.2t	1.0t	1.2t	
With new mast	1.2DEUX	2000	1455	2315	100	/	/	1000	1200
	2760	1735	3015	100	/	/	1000	1200	
	2700	1835	3215	100	/	/	1000	1200	
	3000	1985	3515	100	/	/	1000	1200	
	3300	2135	3815	100	/	/	850	1000	
With new mast	1.2DEUX	3000	2235	4315	100	/	/	750	900
	3600	2385	4615	100	/	/	750	900	
	4000	2535	4915	100	/	/	650	800	
	4300	2685	5215	100	/	/	550	700	
	4700	2835	5515	100	/	/	500	650	
With new mast	1.2DEUX	3000	1900	3020	1457	/	/	1000	1200
	1.2DEUX	4000	1935	4595	1350	/	/	850	750
With new mast	1.2DEUX	4300	2030	4895	1440	/	/	850	850
	1.2DEUX	2000	1950	2700	100	/	/	1000	1200
With new mast	1.2ETEX	1700	1620	3300	100	/	/	1000	1200
	2300	1720	3400	100	/	/	1000	1200	
	2300	1720	3400	100	/	/	1000	1200	
	2300	1720	3400	100	/	/	1000	1200	
	2300	1720	3400	100	/	/	1000	1200	
With new mast	1.2ETEX	3000	2250	4150	100	/	/	750	900
	3600	2400	4450	100	/	/	750	900	
	4000	2550	4750	100	/	/	650	800	
	4300	2700	5050	100	/	/	550	700	
	4700	2850	5350	100	/	/	500	650	
With new mast	1.2ETEX	3000	1995	3550	1457	/	/	1000	1200
	1.2ETEX	4000	1930	4550	1320	/	/	850	750
With new mast	1.2ETEX	4300	2020	4850	1410	/	/	850	850

## 1.4 / 1.6t H series mast

Model	Max. lift height	Lift capacity	Extended lift height	Vertical clearance	Max. lift capacity		Lift capacity		
					1.4t	1.6t	1.4t	1.6t	
With new mast	1.6DEUX	2200	1490	2325	100	/	/	1400	1600
	2800	1745	3025	100	/	/	1400	1600	
	2700	1845	3225	100	/	/	1400	1600	
	3000	1995	3525	100	/	/	1400	1600	
	3300	2145	3825	100	/	/	1200	1400	
With new mast	1.6DEUX	3000	2245	4025	100	/	/	1050	1200
	3600	2395	4325	100	/	/	1050	1200	
	4000	2545	4625	100	/	/	900	1050	
	4300	2695	4925	100	/	/	800	950	
	4700	2845	5225	100	/	/	750	900	
With new mast	1.6DEUX	4000	1935	4595	1300	/	/	850	850
	1.6DEUX	4300	2035	4895	1440	/	/	700	800
With new mast	1.6ETEX	1700	1620	3300	100	/	/	1000	1200
	2300	1720	3400	100	/	/	1000	1200	
	2300	1720	3400	100	/	/	1000	1200	
	2300	1720	3400	100	/	/	1000	1200	
	2300	1720	3400	100	/	/	1000	1200	
With new mast	1.6ETEX	3000	2250	4150	100	/	/	750	900
	3600	2400	4450	100	/	/	750	900	
	4000	2550	4750	100	/	/	650	800	
	4300	2700	5050	100	/	/	550	700	
	4700	2850	5350	100	/	/	500	650	
With new mast	1.6ETEX	3000	1995	3550	1457	/	/	1000	1200
	1.6ETEX	4000	1930	4550	1320	/	/	850	750
With new mast	1.6ETEX	4300	2020	4850	1410	/	/	850	850

## LOAD CHART



CE CERTIFICATE



ISO14001: 1996



ISO9001: 2000



ZHEJIANG HANGCHA ENGINEERING MACHINERY CO.,LTD.  
(ZHEJIANG HANGCHA IMP.& EXP. CO.,LTD.)

[www.hcforklift.com](http://www.hcforklift.com)

Add: 388 Sh Qiao Road, Hangzhou 310022, P.R.China  
Tel: +86-571-88130110 88135220 88130499 (Ext. 8116,8158,8200)  
Fax: +86-571-88132890 88126379  
E-mail: [sales@hcforklift.com](mailto:sales@hcforklift.com)

Ergonomic, multi-function **HANDLE**  
5 support concept **STABILITY**  
SEM MOSFET **CONTROLLER**

**BUILT-IN DURABILITY**

Designed to long life or more of heavy-duty use, the H series stacker is robust and reliable even in extreme conditions.

The lift truck style mast won't distort or corrode and the rollers are skid resistant, resulting in smooth operation even if service is overdue.

Vibration-proof connections to the electronic controller reduce the likelihood of intermittent faults and a damped shock absorber system reduces the vibrations transmitted to the driver to a minimum, even on rough ground.

Service intervals are unusually long for a truck of this type.

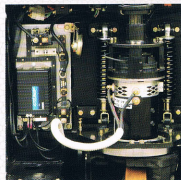
**ADJUSTABLE ELECTRONICS**

The state-of-the-art CURTIS SEM MOSFET controller represents the latest in performance and speed adjustment.

Over 30 parameters can be set to suit the performance to the type of load, the site conditions and to the operator's experience. Truck data is recorded to help track down intermittent faults, reducing costly diagnostic time.

Only high quality components such as contactors, micro-switch, plug and power-off switch are used so as to increase reliability.

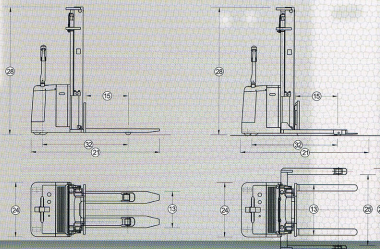
Electronic systems are carefully protected within the chassis body, safe from external damage.



CURTIS adjustable MOSFET SEM control

1.0 / 1.2 / 1.4 / 1.6t Electric Stacker Specifications:

Model	Type	No.	eP										
			CC0519H	CC0512H	CC0514H	CC0516H	CC0513H	CC0515H	CC0514H	CC0519H			
General	Capacity	Kg	1	1000	1200	1400	1600	1000	1200	1400	1600		
	Load centre	mm	2	600				800					
	Power		3	600				800					
	Driver		4	Pedestrian				Pedestrian					
	Lift height standard	mm	5	2000				2000					
	Free lift	mm	6	100				100					
Dimensions	Fork size	mm	7	1150 x 185 x 55			1150 x 185 x 60			920 x 100 x 35		920 x 100 x 35	
	length / width / thickness	mm	8	1150 x 185 x 55			1150 x 185 x 60			920 x 100 x 35		920 x 100 x 35	
	Turning radius	mm	9	1515	1545	1560	1590	1515	1545	1560	1590		
	Required aisle width 1	mm	10	2320	2335	2345	2360	2405	2410	2420	2425		
	Required aisle width 2	mm	11	2375	2380	2390	2395						
	Ground clearance	mm	12	35		30		35		30			
	Fork width overall	mm	13		570 / 680		680		210 - 790		210 - 790		
	Fork height to the ground when forks closed	mm	14			90			35				
	Fork overhang	mm	15	630	660	670	700	595	625	635	665		
	Speed	Full road km/h	km/h	16	5			5			5		
No. load km/h		km/h	17	5.5			5.5			5.5			
Max. gradeability		%	18	8			6			8			
Performance	Lifting/lowering/full load	m/min	19	20			18			20			
	Overall length	mm	20	110 / 200			110 / 200			110 / 200			
	Support the leg length	mm	21	2000 / 850			2010 / 860			1805 / 885			
	Overall width	mm	22	/			/			1810 / 1960			
	Front	mm	23	/			/			850			
	Black	mm	24	/			/			1300			
	Support the leg inside length	mm	25	/			/			1100			
	Support the leg height	mm	26	/			/			90			
	Mast lowered height	mm	27	3515		3525		3550		3550		3550	
	Mast extended height	mm	28	1985		1995		1985		1995		1995	
Wheels/Tires	Tyres front rollers	mm	29	2 / P / 85 x 85		4 / P / 85 x 85		2 / P / 85 x 70		4 / P / 85 x 70			
	Tyres drive rollers	mm	30	1 / P / 230 x 75		1 / P / 230 x 75		1 / P / 230 x 75		1 / P / 230 x 75			
	Tyres stabilizer castors	mm	31	2 / P / 130 x 55		2 / P / 130 x 55		2 / P / 130 x 55		2 / P / 130 x 55			
	Wheel base	mm	32	1305	1335	1355	1385	1305	1335	1355	1385		
	Ball weight	Kg	33	1150		1250		1150		1250			
Control/Motor	Traction	kg/ton	34	1.5		1.5		1.5		1.5			
	Lift	kg/ton	35	2.2		3		2.2		3			
	Voltage	V	36	24		3		24		3			
Control/Motor	Capacity	Ah/Wh	37	210		240		210		240			
	Brake		38	ELECTRPRIC				ELECTRPRIC					
	Control		39	ELECTRPRIC				ELECTRPRIC					



Conventional control with safety reversing pad

Optional platform



Water-resistant lid design